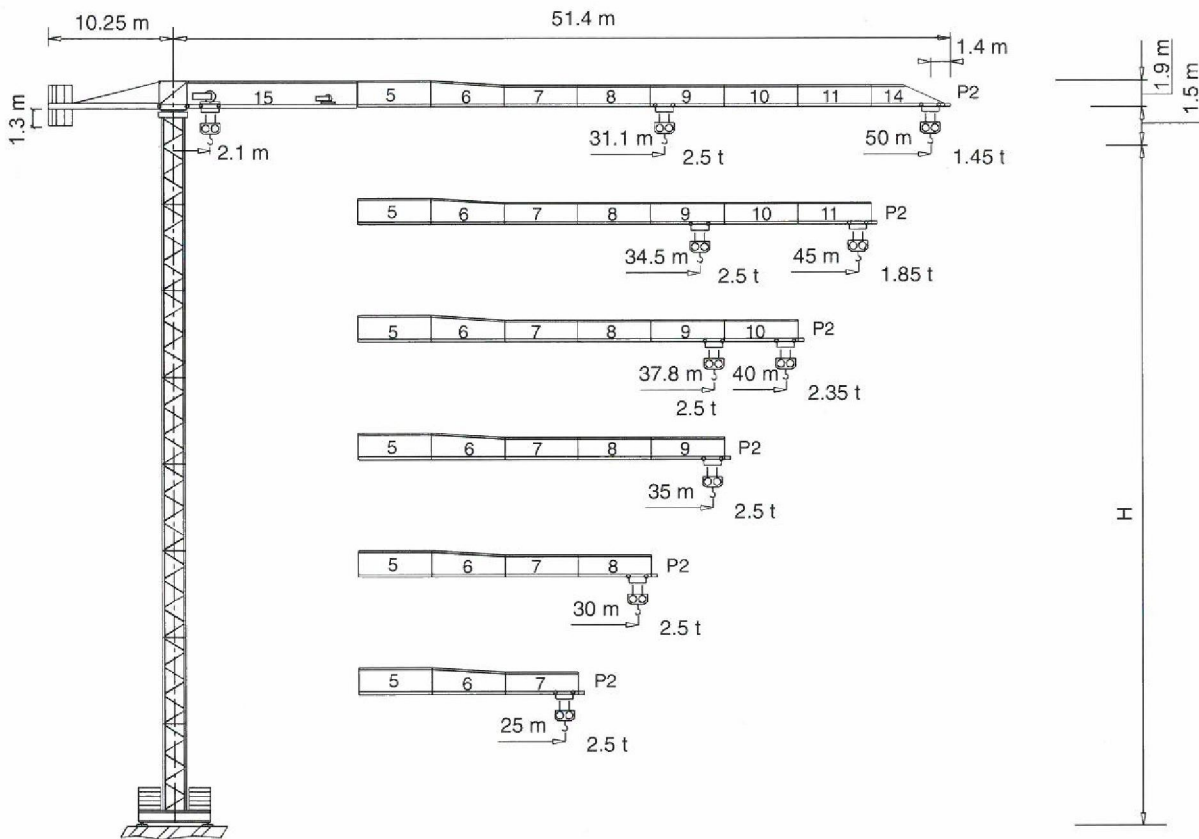


**Gru a torre "Flat Top"**

**"Flat Top" Tower Crane • Grue à tour "Flat Top"**

**"Flat Top" Turmdrehkran • Grúa torre "Flat Top"**



**CE FEM 1.001 A3**

**THE ULTIMATE CRANE™**

**"CITY" CTT 91-2.5 TS12**

Dati illustrativi non impegnativi  
Con riserva di modifica senza preavviso

Specifications and data not binding  
Subject to modification without notice

Données techniques seulement indicatives  
Modifications réservées sans préavis

Angaben und Beschreibung unverbindlich  
Änderungen vorbehalten ohne weitere Mitteilung

Dibujos y datos sin compromiso  
Modificaciones reservadas sin preaviso

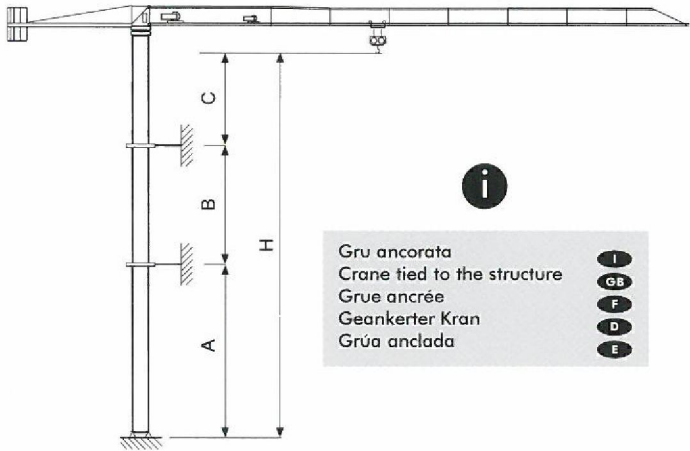
UTE.DOC.REV.002 05 2005

**Diagramma di portata** I     
 **Courbes de charges** F     
 **Curvas de cargas** E  
**Load Diagram** GB     
 **Lastkurven** D

## CTT 91 - 2.5

		m	5	10	15	20	25	30	35	40	45	50
2.5 t	- 31.11 m	t	2.5	2.5	2.5	2.5	2.5	2.5	2.19	1.88	1.64	1.45
2.5 t	- 34.49 m	t	2.5	2.5	2.5	2.5	2.5	2.5	2.46	2.12	1.85	
2.5 t	- 37.85 m	t	2.5	2.5	2.5	2.5	2.5	2.5	2.5	2.35		
2.5 t	- 35 m	t	2.5	2.5	2.5	2.5	2.5	2.5	2.5			
2.5 t	- 30 m	t	2.5	2.5	2.5	2.5	2.5	2.5				
2.5 t	- 25 m	t	2.5	2.5	2.5	2.5	2.5					

**Altre installazioni** I     
 **Autres implantations** F     
 **Otras implantaciones** E  
**Other configurations** GB     
 **Aufstellmöglichkeiten** D



Torre **I**

Tower **GB**

Tour **F**

Turm **D**

Torre **E**

**I** Le prolunghe TS sono disponibili in lunghezze 11.8 m, 5.9 m, 2.95 m.

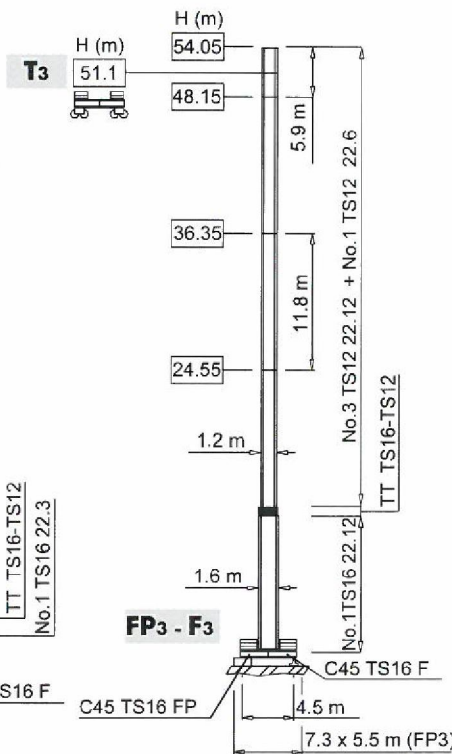
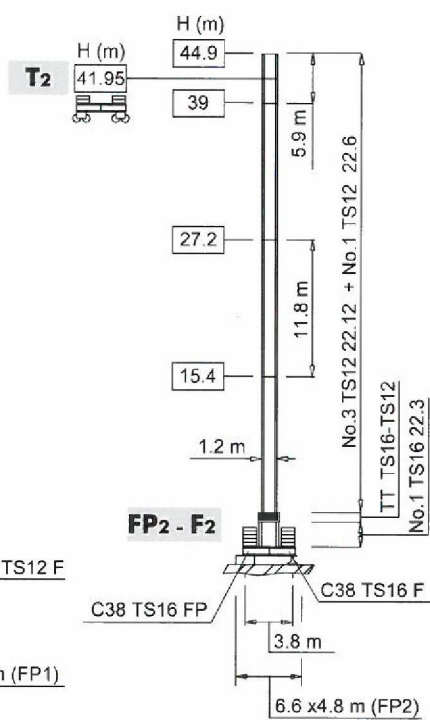
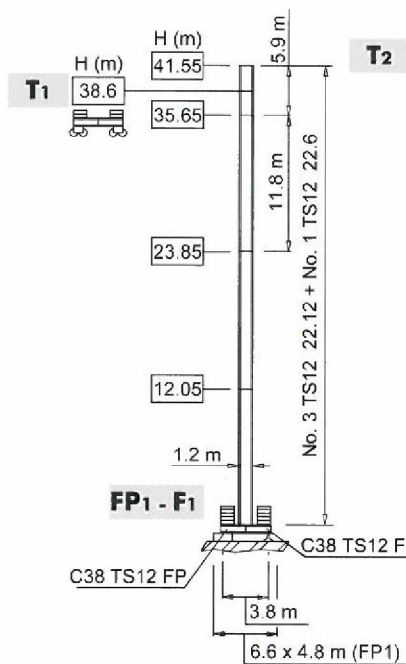
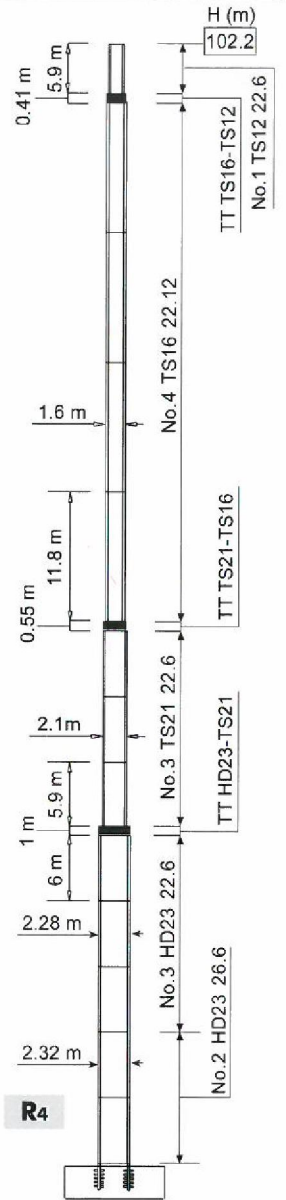
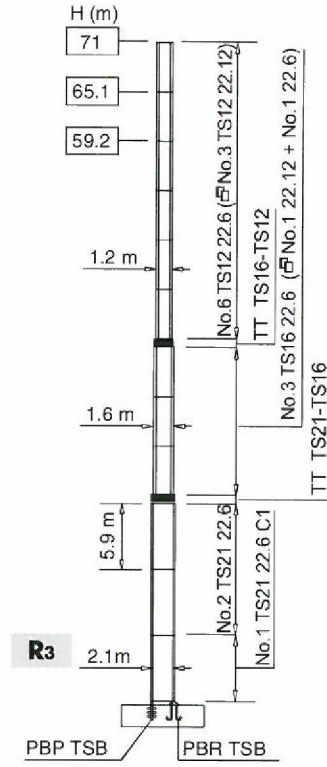
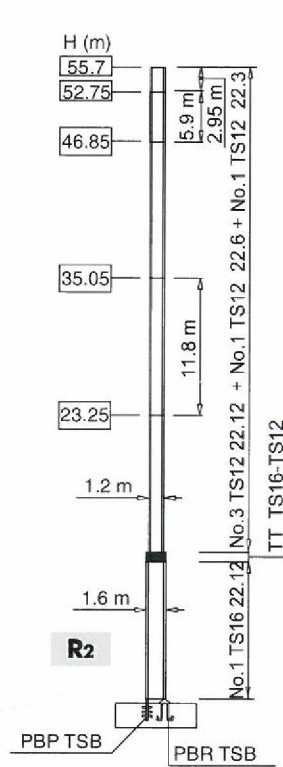
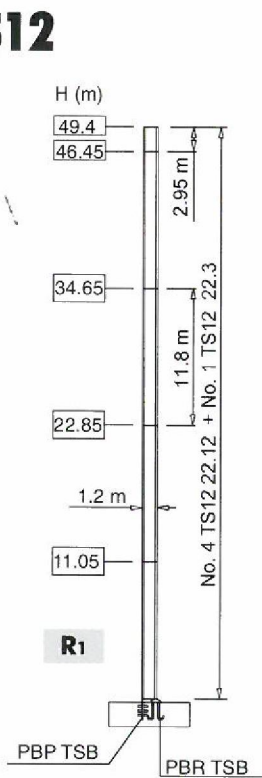
**F** Les éléments de mât TS sont disponibles en longueur 11.8 m, 5.9 m, 2.95 m.

**E** Los tramos de torre TS son disponibles en las medidas de largo 11.8 m, 5.9 m, 2.95 m.

**GB** The available lengths for the TS tower sections are 11.8 m, 5.9 m, 2.95 m.

**D** Die Turmschüsse TS sind mit Längen 11.8 m, 5.9 m, 2.95 m verfügbar.

**TS12**



<b>Meccanismi</b>	<b>I</b>	<b>Mécanismes</b>	<b>F</b>	<b>Mecanismos</b>	<b>E</b>
<b>Mechanisms</b>	<b>GB</b>	<b>Antriebe</b>	<b>D</b>		

	11 APC 25	31 * kVA	400 V - 50 Hz
	15 AFC 25	40 * kVA	400 V - 50 Hz / 460 V - 60 Hz
			2000/14/CE

\* Gru senza traslazione / Crane without travelling equipment / Grue sans translation / Krane ohne Schienenfahren / Grúa sin traslación

		<b>m/min</b>	<b>t</b>	<b>kW</b>	
	<b>11 APC 25</b>	6	2.5	11	186 m
		20	2.5		
		40	1.25		
	<b>15 AFC 25 (VARIANT)</b>	0 ⇌ 1.7	2.5	15	186 m
		1.7 ⇌ 6	2.5		
		6 ⇌ 28	2.5		
		28 ⇌ 46	1.44		
		46 ⇌ 57	1.1		

	<b>DAD 2 2 D1</b>	0 - 22 - 44 m/min	2.2 - 1.5 kW
	<b>DVF 3 4 D4 (VARIANT)</b>	0 ⇌ 6 ⇌ 30 ⇌ 60 m/min	4 kW
	<b>SSR 1 1 65</b>	0.76 r.p.m.	1 × 65 Nm
	<b>▲ TAD 1RP 2M3</b>	0 - 24 m/min	2 × 3 kW
	<b>● TAD 2RP 2M3</b>		
	<b>i</b>		

	<b>Max. H [m]</b>	
<b>T<sub>1</sub></b>	38.6	-
<b>T<sub>2</sub></b>	41.95	-
<b>T<sub>3</sub></b>	-	51.1

	<b>I</b>	<b>GB</b>	<b>F</b>	<b>D</b>	<b>E</b>
Sollevamento	Hoisting	Levage	Heben	Elevación	
Traslazione carrello	Trolleying	Distribution	Katzfahren	Distribución	
Rotazione	Slewing	Orientation	Schwenken	Orientación	
Traslazione	Travelling	Translation	Schienenfahren	Traslación	
Direttiva sul livello acustico	Directive on noise level	Directive sur le niveau acoustique	Richtlinie für den Schall-Leistungspegel	Directiva sobre el nivel acustico	
Consultateci	Consult us	Nous consulter	Auf Anfrage	Consultarnos	
Potenza totale richiesta	Power requirements	Puissance totale nécessaire	Geforderte Stromstärke	Potencia necesaria	
Alimentazione	Power supply	Alimentation	Stromversorgung	Alimentación	

**Gru Comedil s.r.l.**

A Terex Company



Via S. Egidio 42/A, 33074 Fontanafredda (PN) - Italy  
Tel. (+39) 0434 567 311 - Telefax (+39) 0434 998631

Internet e-mail: info@comedil.com  
Internet home page: www.comedil.com

**Divisione Automontanti**

Via Alessandrina, 25 - 20095 Cusano Milanino (MI) - Italy  
Tel. (+39) 02 613 16011 - Telefax (+39) 02 613 16034

Internet e-mail: info.CBR@comedil.com